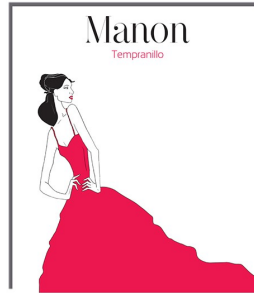


2018

Enticing aromas and flavors of rose petal, incense, and black cherry lead to a forward, succulent wine that opens in the glass to reveal a pleasure-bent offering that over-delivers in a big way.



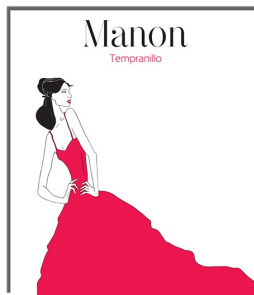
2018

Enticing aromas and flavors of rose petal, incense, and black cherry lead to a forward, succulent wine that opens in the glass to reveal a pleasure-bent offering that over-delivers in a big way.



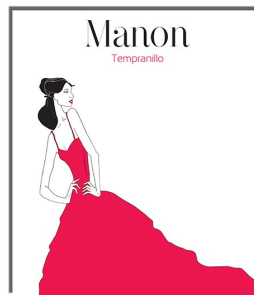
2018

Enticing aromas and flavors of rose petal, incense, and black cherry lead to a forward, succulent wine that opens in the glass to reveal a pleasure-bent offering that over-delivers in a big way.



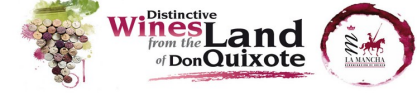
2018

Enticing aromas and flavors of rose petal, incense, and black cherry lead to a forward, succulent wine that opens in the glass to reveal a pleasure-bent offering that over-delivers in a big way.



2018

Enticing aromas and flavors of rose petal, incense, and black cherry lead to a forward, succulent wine that opens in the glass to reveal a pleasure-bent offering that over-delivers in a big way.



2018

Enticing aromas and flavors of rose petal, incense, and black cherry lead to a forward, succulent wine that opens in the glass to reveal a pleasure-bent offering that over-delivers in a big way.

